

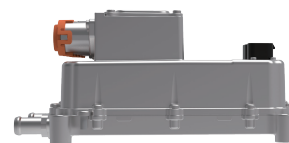
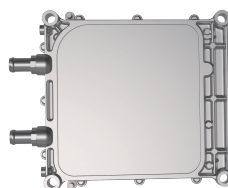
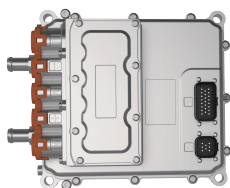
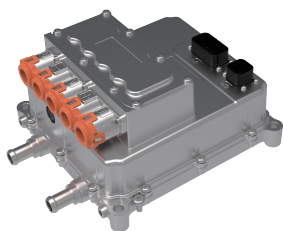
D04 MODEL

E-MOTORCYCLE MOTOR CONTROLLER

D04 Model



Applicable to large-capacity electric motorcycles with rated input voltage 48V -144V and peak output power up to 18kW-56kW.
Compatible with *PMSM and ACIM*



Efficiency \geq
98%

IP Grade
67

Weight
4.5 KG

- Compatible with resolver and optical encoder
- Compact and concise
- Superb overload capability
- Advanced vector control algorithm generates the maximum possible torque and efficiency across the entire speed range and increases gradeability
- Water cooling, fan cooling and natural cooling optional
- Multi-function I/O ports to meet different applications
- CAN bus communication
- Customized solution to meet different vehicle requirements
- All-sided fault diagnosis, monitoring and protection function
- Wide rated voltage input acceptable: 48V-144V
- Peak output current range: 250A~500A

APPROVAL STANDARDS

GB/T 18488.1-2015

GB/T 18488.2-2015

GB/T29307-2012

GB/T 2423.17-2008

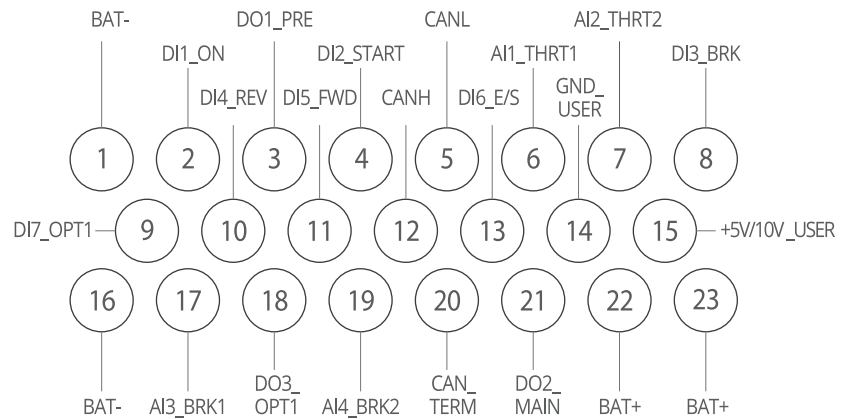
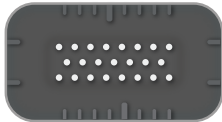
PARAMETERS

Motor Type	-	PMSP, ACIM	Communication	CAN, Hardwire
Power Rating	kW	10~25	Input Terminals	Digital 7 & Analog 4
Peak Power	kW	18~56	Power Supply:	1 channel
Rated Current	A	130~230	Motor Temperature	KTY84, PT1000, NTC
Peak Current	A	250~500	Start Torque	0Hz,200%
Input Voltage	V DC	40~180	Speed Range	1:1000
Rated Input Voltage	V DC	48	Efficiency	≥98
Output Frequency	Hz	0.00-1000	Operating Ambient Temperature	-40~+55
Switching Frequency	kHz	0.7~16	Cooling Method	Natural, Fan, Liquid
Torque Response	ms	<5	Weight	4~4.5
Torque Accuracy	%	±5	Protection Level	IP 67
Speed Accuracy	%	±0.02	Storage Temperature	-40~+85
Accel/Decel Time	S	0.00~60000	Dimensions	262.4*210*117.5(Water cooling)

CONNECTORS

23 Pin

23pin J1 connectors definition



GTAKE is catering a wide variety of EV/HEV motor controllers with the solution of flexible **N+N** combination, covering the applications on electric motorcycles, commercial vehicles, engineering machinery and passenger cars, fulfilling the power and performance requirements of different vehicles. Superb products and our expertise will bring you satisfaction whether in the progress of your development or mass production. DO NOT hesitate to contact us for more ...

