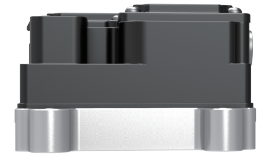
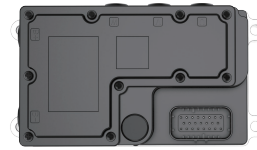
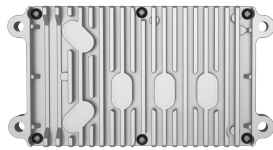
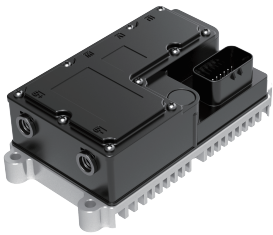


D11 MODEL
E-MOTORCYCLE MOTOR CONTROLLER

Applicable to two-wheelers, e-scooters, e-motorcycles, with rated input voltage 48V and peak output power up to 6kW
Compatible with *PMSM, ACIM and BLDC*

D11 Model

KTZ05H19ZMAXX



Efficiency \geq
98%

IP Grade
67

Weight
0.9KG

- Compatible with magnetic encoder (TLE5012B/AS5047) and Hall sensor
- Superb overload capability
- Compact and concise
- Advanced vector control algorithm generates the maximum possible torque and efficiency across the entire speed range and increases gradeability
- Natural cooling
- Multi-function I/O ports to meet different applications
- CAN bus communication
- Customized solution to meet different vehicle requirements

APPROVAL STANDARDS

GB/T 18488.1

GB/T 17619-1998

GB/T 28046.3-2011

GB/T 2423.17

GB/T 18655-2010

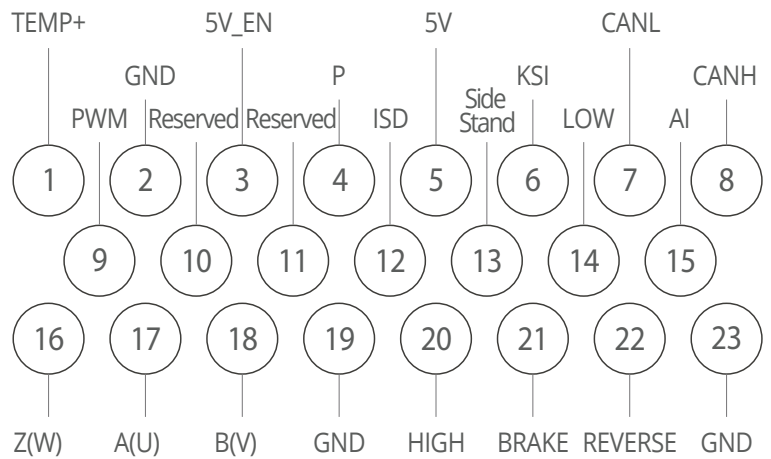
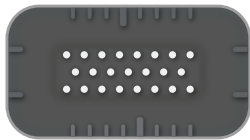
PARAMETERS

Motor Type	-	PMSM, ACIM, BLDC	Communication	-	CAN Bus
Power Rating	kW	3	Input terminals	-	Digital 6 & Analog 1
Peak Power	kW	6	Power supply:	-	1 channel
Rated Current	A	75	Motor Temperature	-	NTC, KTY84, PT1000
Peak Current	A	190(1 Min)	Start Torque	-	0Hz,200%
Input Voltage	V DC	40~70	Speed range	-	1:1000
Rated Input Voltage	V DC	48	Efficiency	%	≥98
Output Frequency	Hz	0.00-600	Operating Ambient Temperature	°C	-40~+55
Switching frequency	kHz	0.7~10	Cooling Method	-	Natural
Torque response	ms	<5	Weight	Kg	0.9
Torque accuracy	%	±5	Protection Level	-	IP 67
Speed Accuracy	%	±0.02	Storage temperature	°C	-40~+85
Accel/Decel time	S	0.00~60000	Dimensions	mm	180*99*60

CONNECTORS

23 Pin

23 Pin Controller Signal Connector:
AMP 770520-1/770854-1



GTAKE is catering a wide variety of EV/HEV motor controllers with the solution of flexible **N+N** combination, covering the applications on electric motorcycles, commercial vehicles, engineering machinery and passenger cars, fulfilling the power and performance requirements of different vehicles. Superb products and our expertise will bring you satisfaction whether in the progress of your development or mass production. DO NOT hesitate to contact us for more ...

